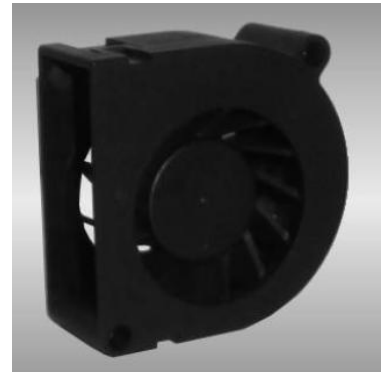




# □ 50x50x20 mm



**Motor:** DC single phase brushless motor

**Material/Frame:** PBT (94V-0); Impeller: PBT(94V-0)

**Operation Temperature:**

Two ball bearing -10°C ~ +70°C

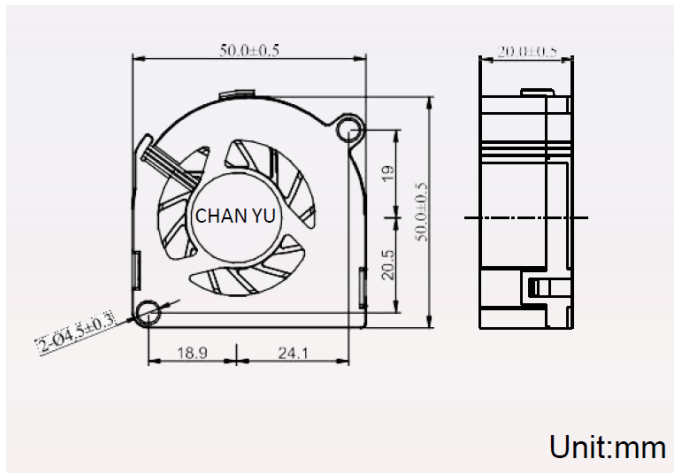
FMB/Sleeve bearing -10°C ~ +50°C

**Storage Temperature:** -40°C ~ +80°C

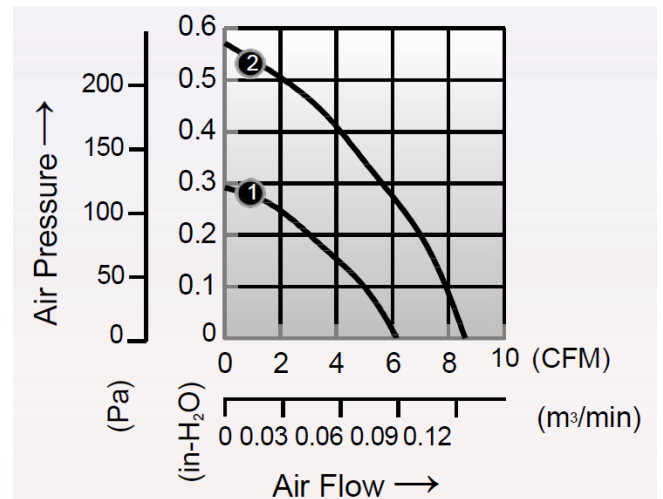
**Non-condensing environment**

**Weight:** 38g / PC

## Drawing:



## Characteristic Curves



## SPECIFICATION

Model	Voltage (V)	Operating Voltage Range(VDC)	Current (A)	Speed (RPM)	Air Flow (CFM)	Pressure (in-H2O)	Noise (dB)
CDB055020MB	5	4.5 – 5.5	0.18	5000	6.1	0.29	33
CDB125020MB	12	7.0 – 13.2	0.08	5000	6.1	0.29	33
CDB125020HB	12	7.0 – 13.2	0.21	7000	8.0	0.57	50