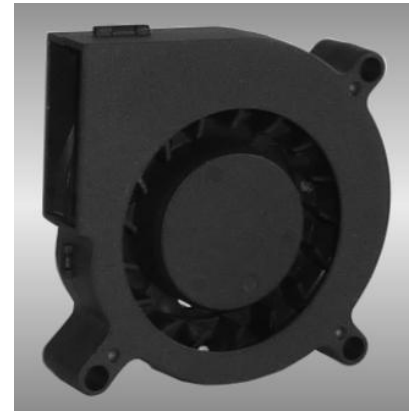




# □ 60x60x15 mm



**Motor:** DC single phase brushless motor

**Material/Frame:** PBT (94V-0); Impeller: PBT(94V-0)

**Operation Temperature:**

Two ball bearing -10°C ~ +70°C

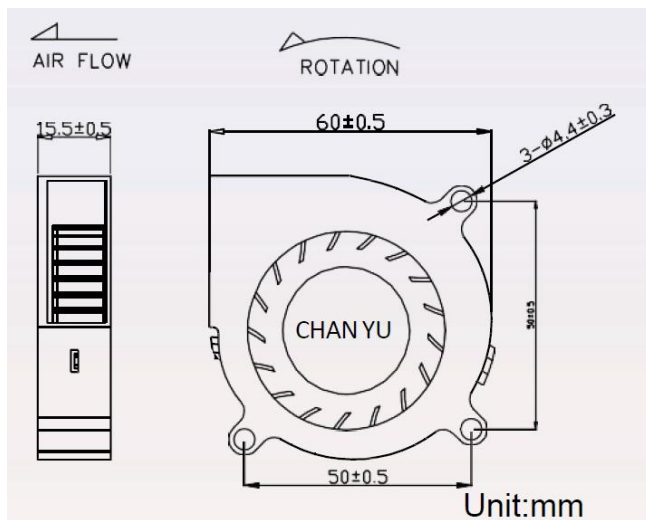
FMB/Sleeve bearing -10°C ~ +50°C

**Storage Temperature:** -40°C ~ +80°C

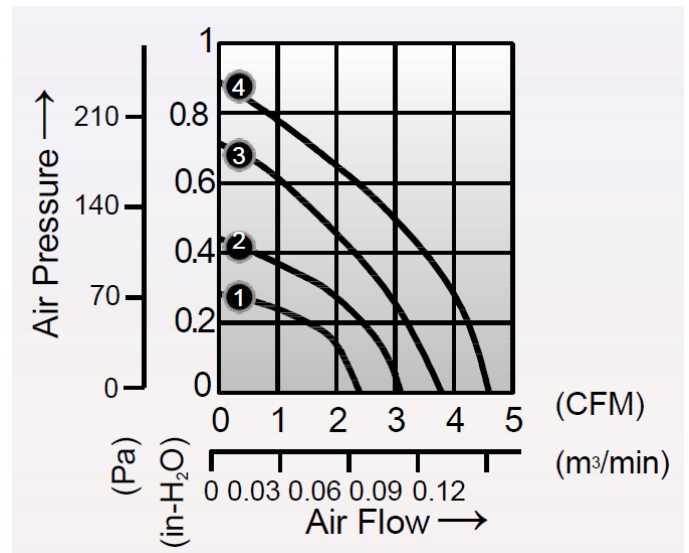
**Non-condensing environment**

**Weight:** 40g / PC

## Drawing:



## Characteristic Curves



## SPECIFICATION

Model	Voltage (V)	Operating Voltage Range(VDC)	Current (A)	Speed (RPM)	Air Flow (CFM)	Pressure (in-H2O)	Noise (dB)
CDB126015LB	12	7.0 – 13.2	0.07	3500	2.4	0.28	27
CDB126015MB	12	7.0 – 13.3	0.09	4500	3.1	0.44	33
CDB126015HB	12	7.0 – 13.4	0.11	5500	3.8	0.71	37
CDB126015XB	12	7.0 – 13.4	0.13	6500	4.6	0.89	45