



ø170x65 mm
(ø6.69x2.55 in)



Material: Plastic impeller

Ambient Temperature Range: -20°C ~ +70°C

Operating Voltage Range: Rated Voltage ±10%

Bearing: Ball bearing (TÜV & UL approval)

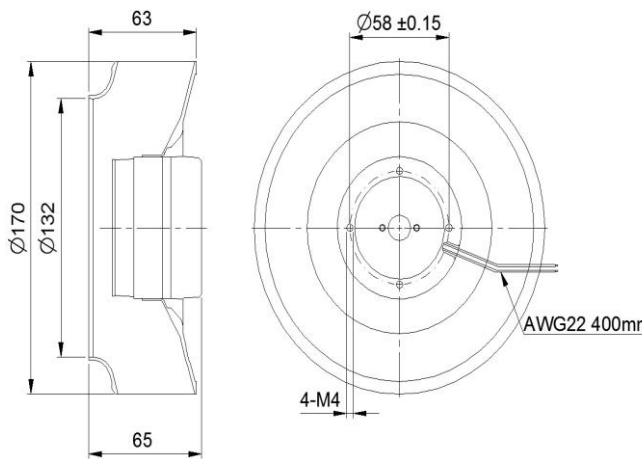
Motor Structure: AC Induction Capacitor Motor

Motor protection: Thermal Protected (Auto Restart)

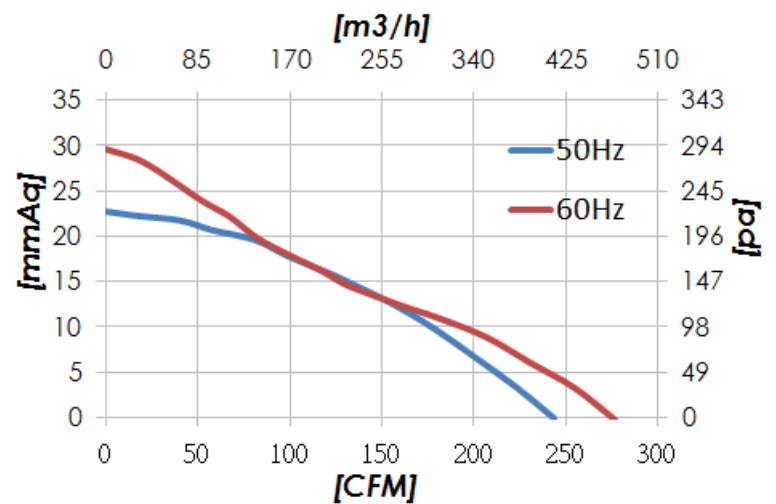
Termination: Lead wire

Weight: 900g / PC

Dimension (units:mm)



Characteristic Curves



SPECIFICATION

Model	Voltage (V)	Freq. (Hz)	Current (A)	Power (W)	Speed (RPM)	Air Flow (CFM)	Pressure (mm Aq)	Noise (dB)	TÜV UL
CYC11765HB	115	50/60	0.26/0.27	27/31	2750/3100	243/276	23/30	67/69	✓
CYC21765HB	230	50/60	0.1/0.13	24/30	2750/3100	243/276	23/30	67/69	✓