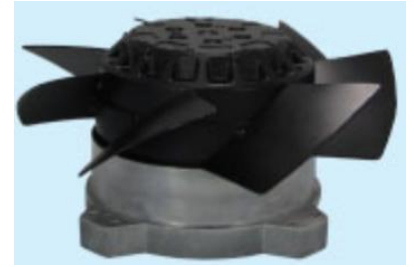


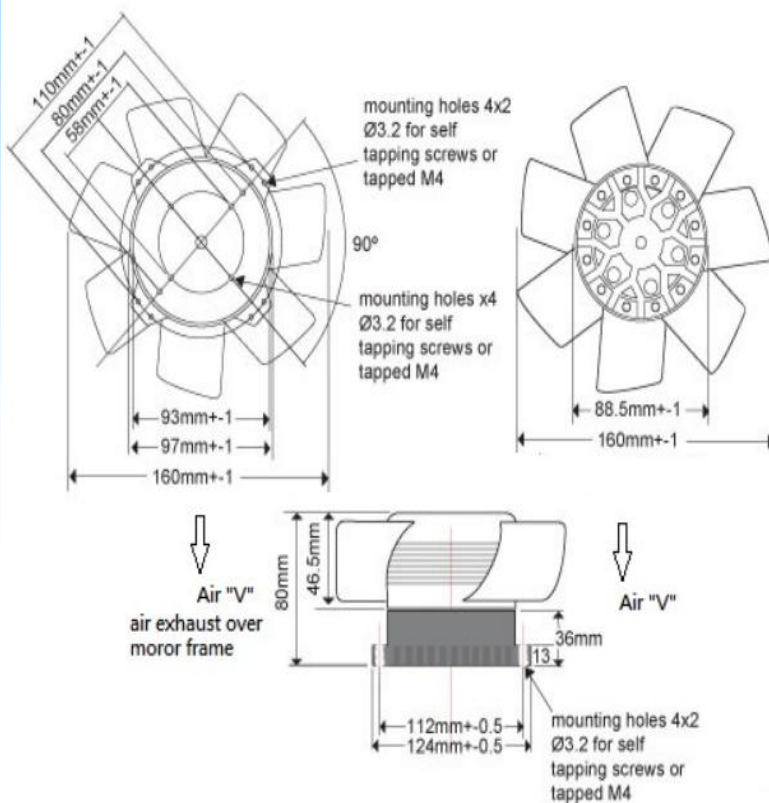


□ 160x80mm (□ 6.29x3.14 in)

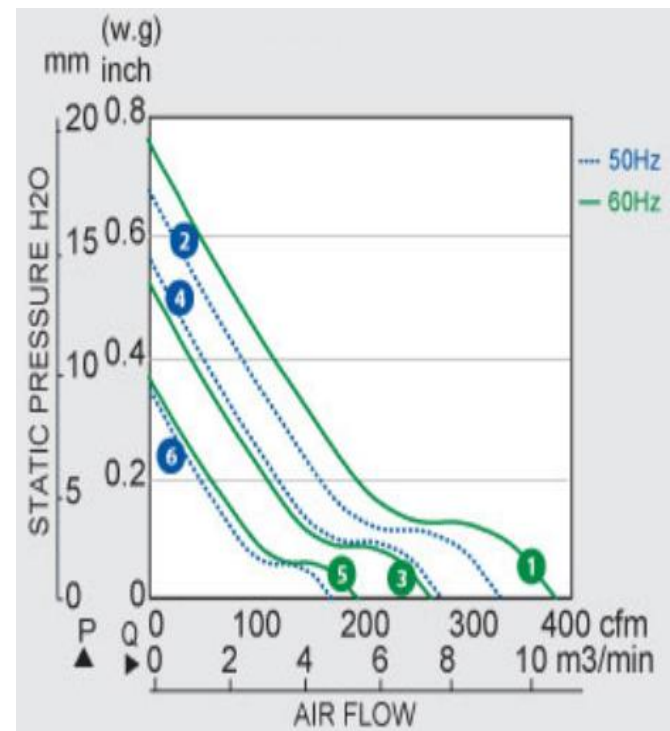


- Impeller:** Steel metal fan blades
- Ambient Temperature Range:** -30°C ~ +80°C
- Operating Voltage Range:** Rated Voltage ±10%
- Bearing:** Ball bearing
- Motor Structure:** Capacitor induction
- Motor protection:** Thermal Protected
- Termination:** Lead wire
- Package:** 1100g / PC

Dimension (units:mm)



Characteristic Curves



SPECIFICATION

Model	Voltage (V)	Freq. (Hz)	Power (W)	Speed (RPM)	Air Flow (CFM)	Pressure (mm Aq)	Noise (dB)
CYMS11680HB	115	50/60	60/80	2800/3250	340/410	17.27/19.05	62
CYMS21680HB	230	50/60	60/80	2800/3250	340/410	17.27/19.05	62